



Chesterton Road, Cambridge, CB4 1AA

CHEFFINS

Chesterton Road

Cambridge,
CB4 1AA

A well presented 1 bedroom first floor flat boasting an array of original period features and located on Mitchams Corner. The accommodation comprises open plan living room/kitchen, 1 double bedroom, bathroom and store cupboard. Communal courtyard with bicycle railings. We regret no pets. Furnished. Available from 22/10/2025. EPC: C and Council Tax Band: C.

LOCATION

Located on Mitchams Corner in the West Chesterton ward of Cambridge the property is positioned a short distance from the River Cam, Midsummer Common and Jesus Green. The property benefits with an excellent range of local amenities nearby and is convenient for access to the historic city centre and Cambridge Science Park.



£1,295 PCM





COMMUNAL ENTRANCE

OPEN PLAN KITCHEN/LIVING ROOM

fitted kitchen with wall and base units, sink, and integrated appliances including oven, gas hobs with extractor above, fridge and dishwasher. Living area with bay window to front aspect and a range of original features including feature fireplace (not usable) and decorative cornicing and ceiling roses. Furniture includes 2 seater sofa, coffee table and shelving unit.

BEDROOM

with built in wardrobes, window to rear aspect and feature decorative cornices and ceiling rose. Furniture includes double bed and bedside table.

BATHROOM

with shower over bath, toilet, hand wash basin, window to rear aspect and store cupboard housing a washer dryer.

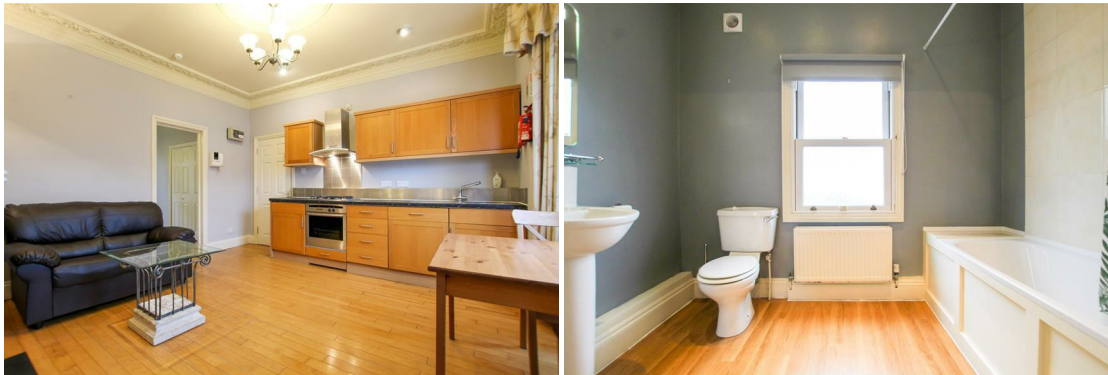
LETTING AGENT NOTES

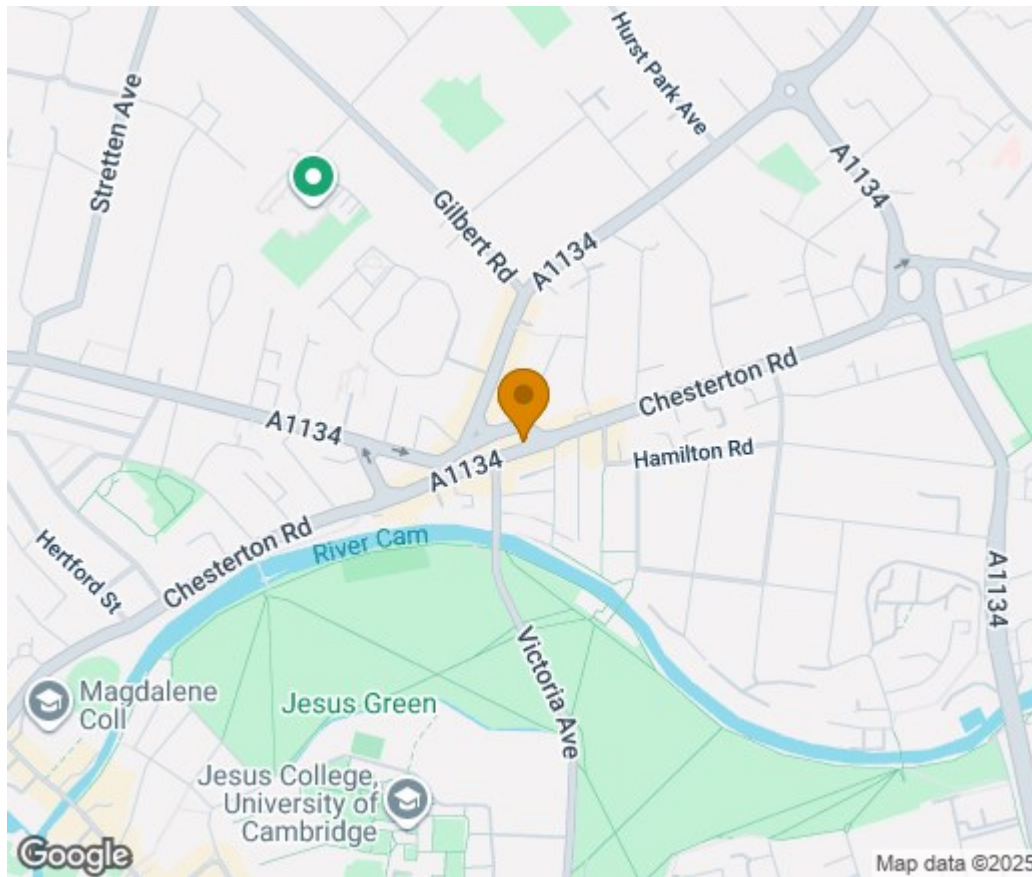
For more information on this property please refer to the Material Information brochure on our Website.

Term - Minimum 6 month tenancy

Holding Deposit - £298

Deposit - £1494





Energy Efficiency Rating		
Very energy efficient - lower running costs	Current	Potential
(92 plus) A		
(81-91) B		
(69-80) C	69	75
(55-68) D		
(39-54) E		
(21-38) F		
(1-20) G		
Not energy efficient - higher running costs		
England & Wales		
EU Directive 2002/91/EC		

Agents note:

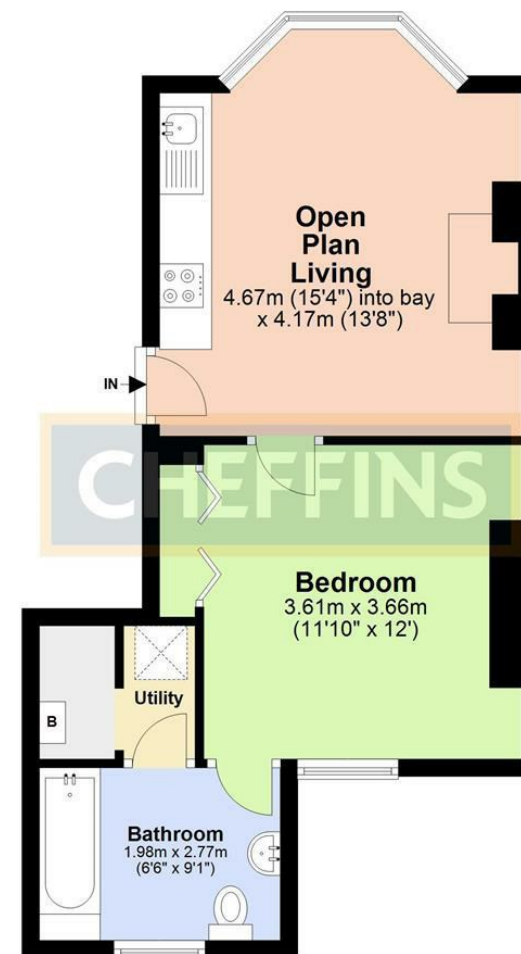
For more information on this property please refer to the Material Information Brochure on our website.

Clifton House, 1-2 Clifton Road, Cambridge, Cambridgeshire, CB1 7EA | 01223 271916 | cheffins.co.uk

IMPORTANT: we would like to inform prospective purchasers that these sales particulars have been prepared as a general guide only. A detailed survey has not been carried out, nor the services, appliances and fittings tested. Room sizes should not be relied upon for furnishing purposes and are approximate. If floor plans are included, they are for guidance only and illustration purposes only and may not be to scale. If there are any important matters likely to affect your decision to buy, please contact us before viewing the property.

Upper Ground Floor

Approx. 39.3 sq. metres (423.2 sq. feet)



Total area: approx. 39.3 sq. metres (423.2 sq. feet)

Plan produced using PlanUp.

